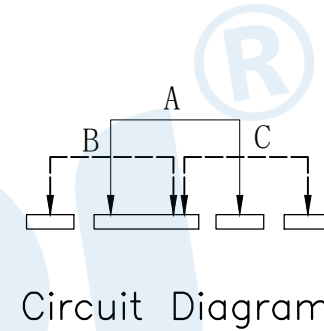
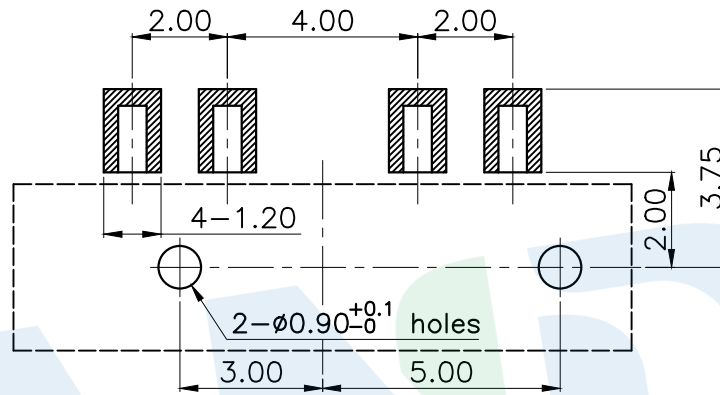
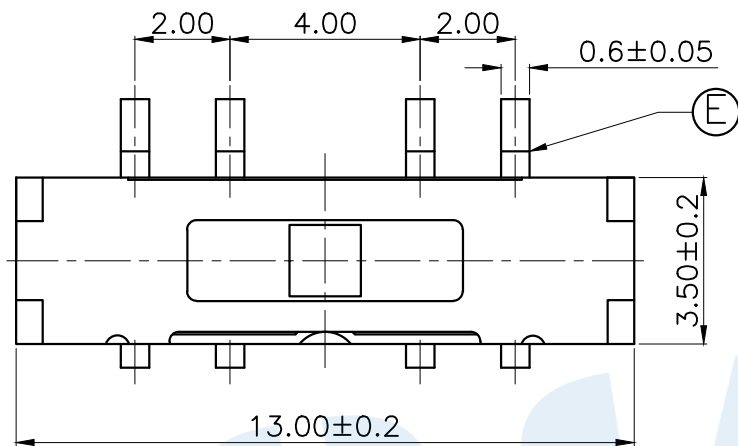
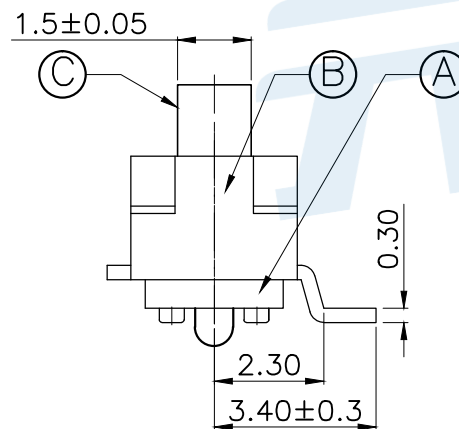
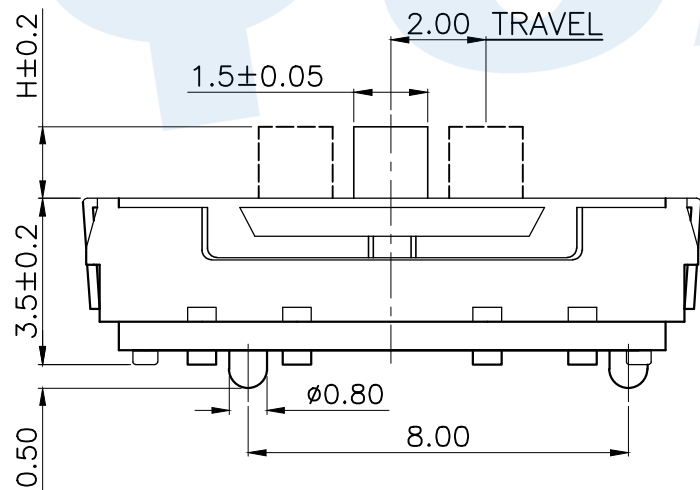


RoHS



PCB Layout(Pattern side)



Code	H	Operating force
A1	2.0	250±80gf
A2	3.0	
A3	4.0	

(E)	Terminal		4	Phosphorus copper	Silver
(D)	Contact reed		1	Phosphorus bronze	Silver covered
(C)	Handle		1	PA46	Black
(B)	Cover		1	SUS	Natural
(A)	Base		1	LCP	Black
NO.	Name	Number	Qty	Materil	Remarks

**YUANDI®** Yuandi Electronics Co, Ltd

design	date	name	TOGGLE SWITCH
Review	date	model	TA-3508-A□
Approved	date		

Drawing number: Proportion 1:1 unit mm gage number A4

modify Review Approved Tolerance not specified